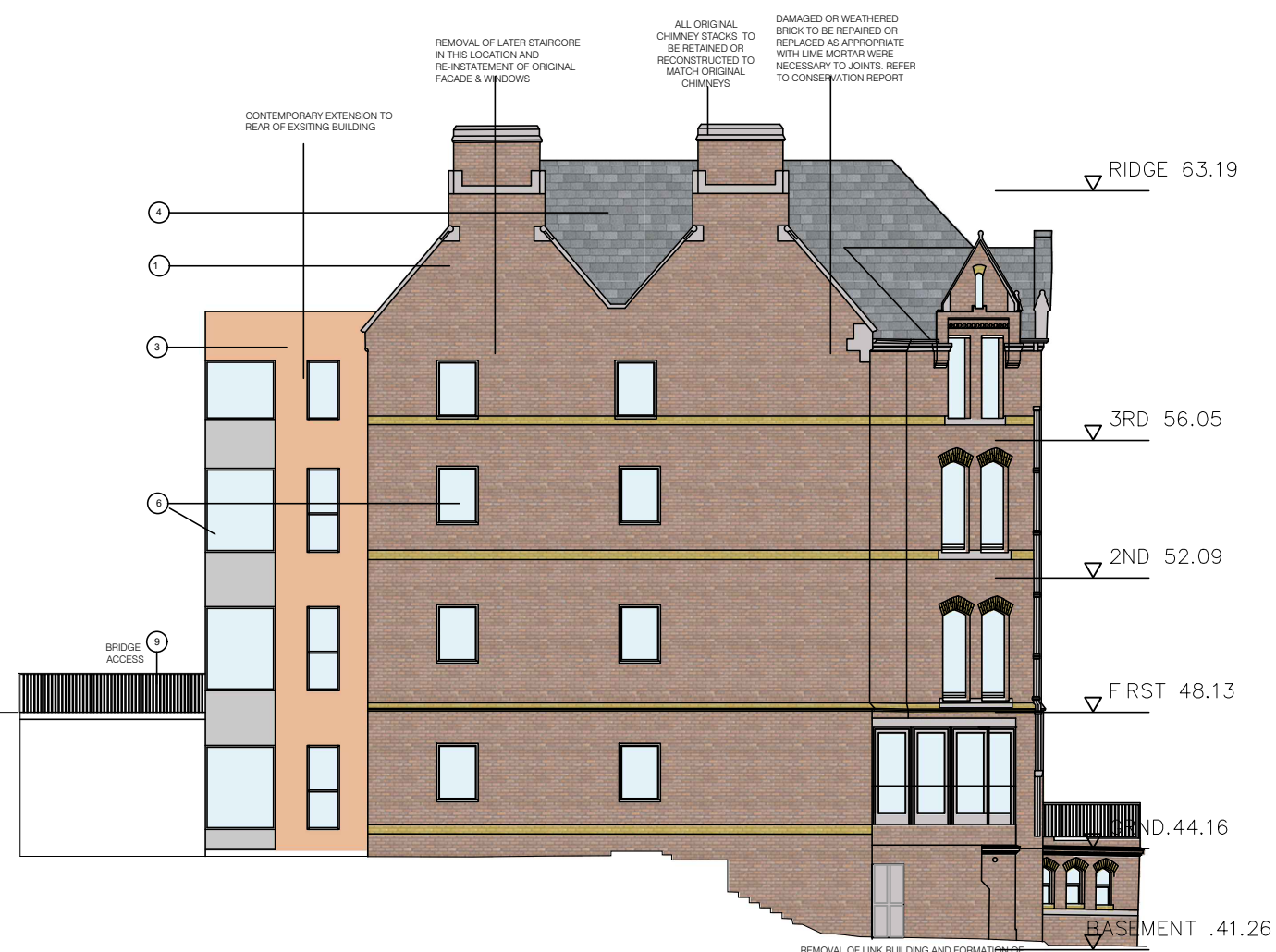


1 Proposed South Elevation - St. Kevin's Apartments  
1:200 **NO CHANGE**

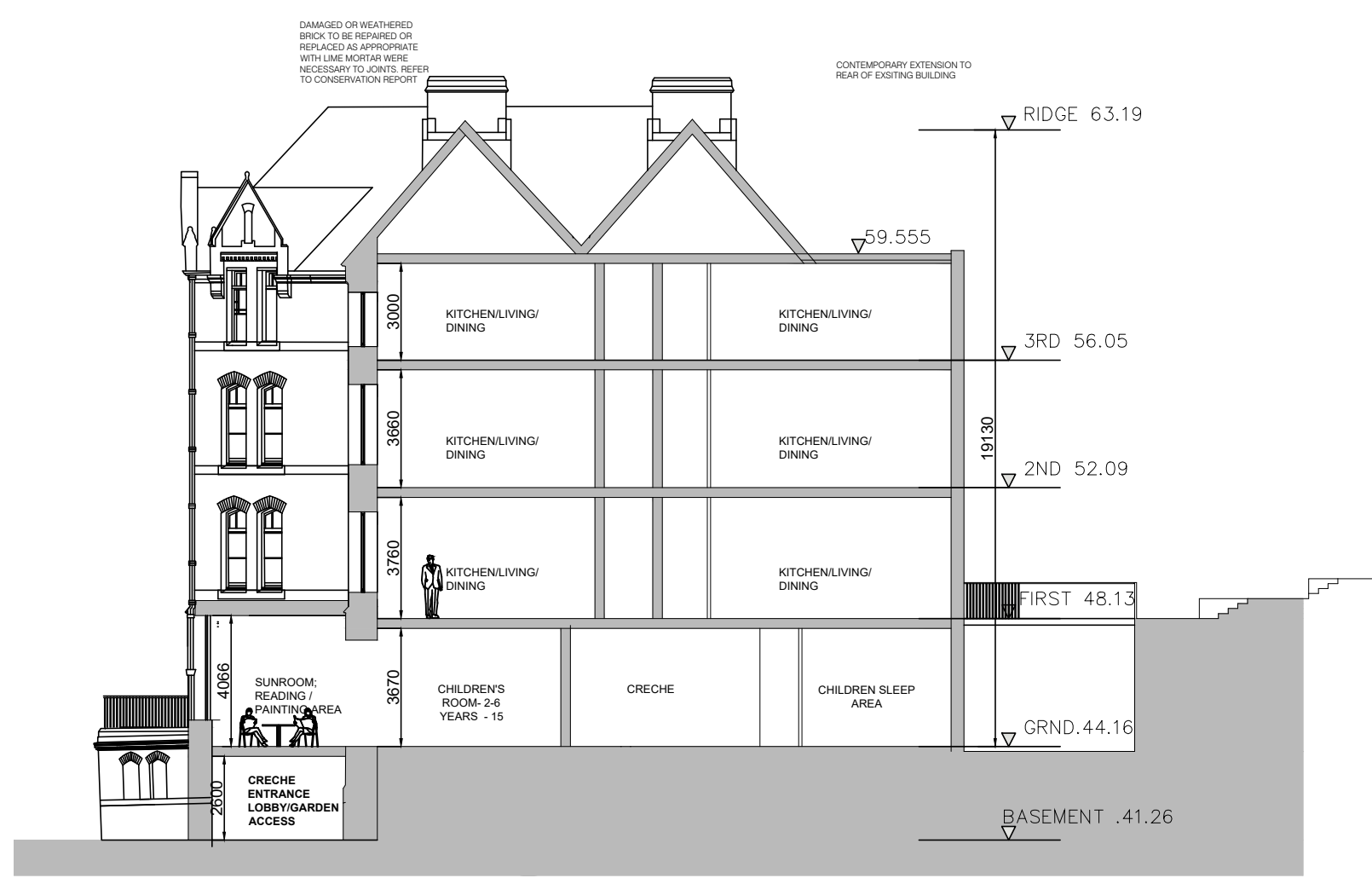


2 Proposed North Elevation - St. Kevin's Apartments  
1:200

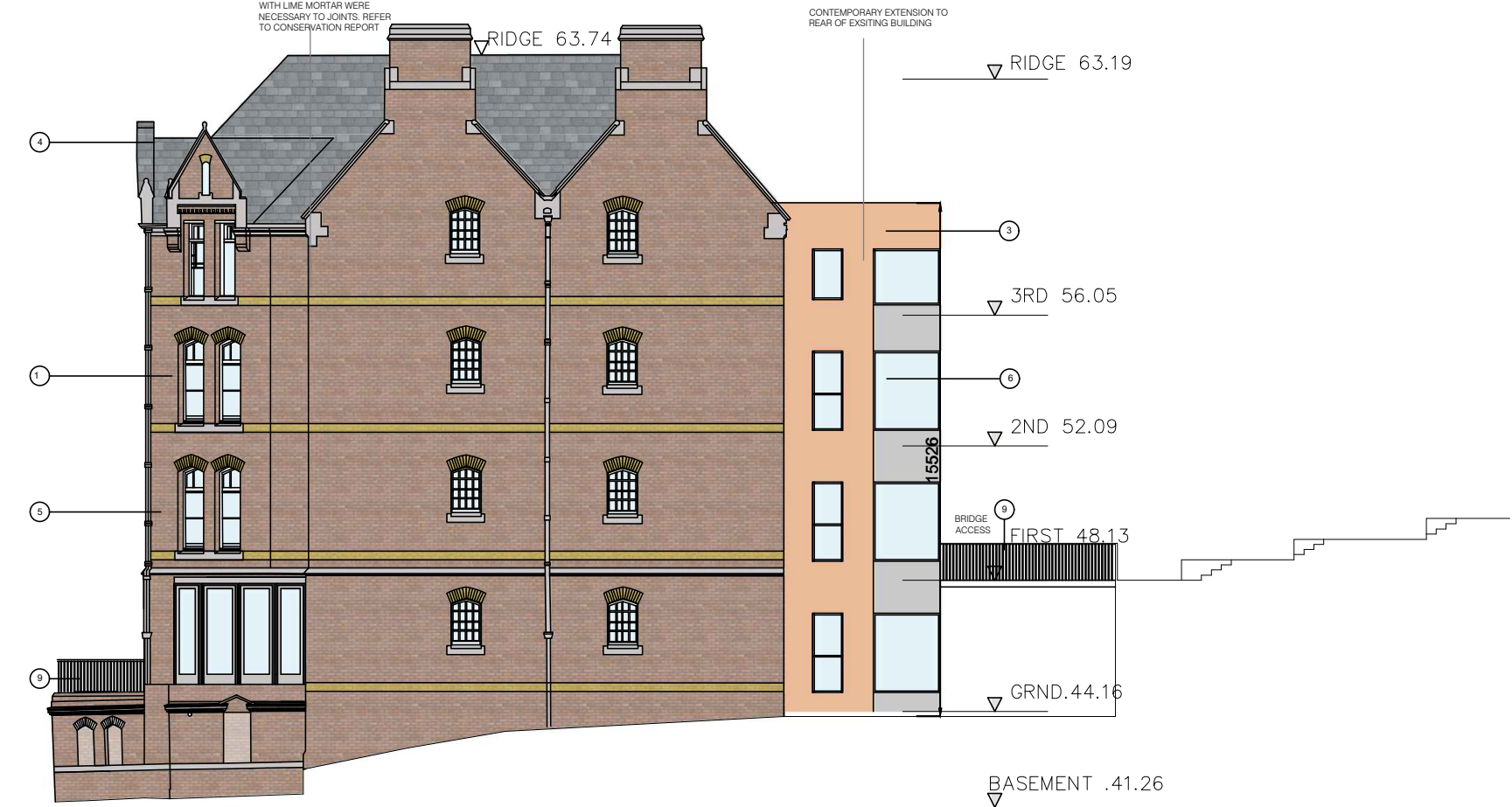
Creche within St. Kevin's hospital building replaced with 6no. apartments



3 Proposed East Elevation - St. Kevin's Apartments  
1:200 **NO CHANGE**



4 Section AA - St. Kevin's Apartments  
1:200 **NO CHANGE**



5 Proposed West Elevation - St. Kevin's Apartments  
1:200 **NO CHANGE**

ORIGINAL SHEET SIZE = A1

DO NOT SCALE FROM THIS DRAWING. USE FIGURED DIMENSIONS IN ALL CASES. VERIFY DIMENSIONS ON SITE AND REPORT ANY DISCREPANCIES TO THE ARCHITECTS IMMEDIATELY. THIS DRAWING IS COPYRIGHTED AND MAY ONLY BE REPRODUCED WITH THE ARCHITECTS PERMISSION.

NOTES

Please read these drawings in conjunction with John Cronin & Associates Architectural Heritage Impact Assessment & Method statement.

Material Legend:

- ① Existing brick
- ② Existing Stone
- ③ Selected painted / coloured render
- ④ Natural slates
- ⑤ Selected painted hardwood window/ door
- ⑥ Selected Aluminium / PVC window frames
- ⑦ Selected anodised aluminium rainwater goods
- ⑧ Selected concrete copings
- ⑨ Selected painted galvanised steel railings

REV	DATE	BY	CHKD	REASON

JOB	
St. Kevin's Residential Development at the former St. Kevin's Hospital and Grounds Shanakiel, Cork	
CLIENT	
Land Development Agency	

PLANNING	
DRAWING	
St. Kevin's Apartments Proposed Elevations and Section AA	
DATE	SCALE
27.10.2023	1:200 @ A1
DRAWN	REVISION
A. O'Shea	P02
CHECKED	
P. Mulligan	
DWG NUMBER	
SKC -RAU-SK-XX-DR-A-2302	

Reddy Architecture + Urbanism  
Cork Office,  
Douglas Business Centre, Carrigrohane Road, Douglas, Co. Cork

T: +353 (0)21 4362922  
W: www.reddyarchitecture.com  
E: cork@reddyarchitecture.com